

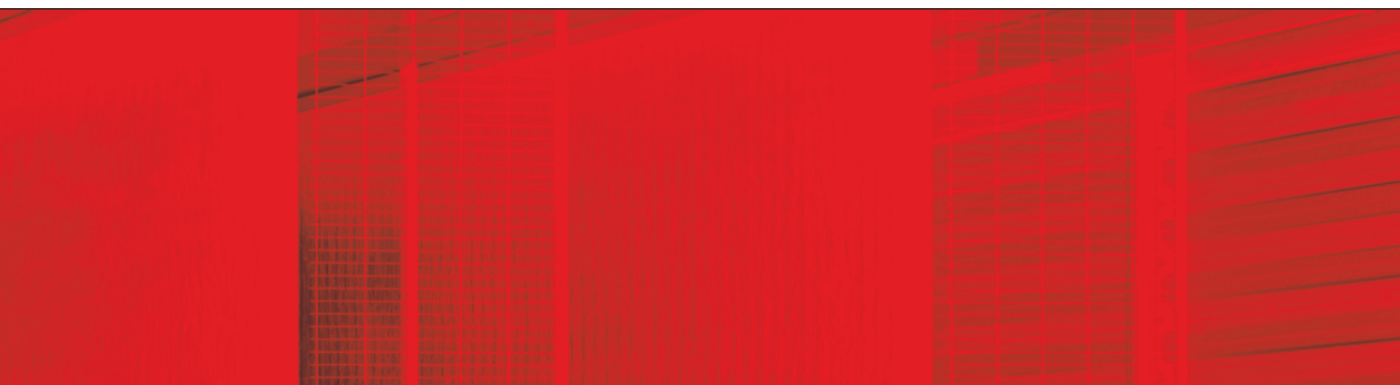
A white Ford Focus car is positioned on a blue hydraulic lift in a large industrial facility, likely a car manufacturing plant. The car is angled towards the left, showing its front headlight, grille, and front wheel. The background is filled with industrial equipment, including overhead cranes, structural beams, and various tools and materials scattered around. The lighting is bright, coming from large windows or skylights at the top of the building. The overall scene depicts a modern automotive production environment.

TOTALREX



TOTALREX





The pantograph line also includes products which allow a person to remain on-board. This option is suitable for those cases where the distance traveled is less than 4 mt. or, for the same distance, wall anchoring is not possible.



As seen in the photo, the person can operate the lift while seated in the vehicle (for the sake of clarity, the photographs were taken inside a building since it would be impossible to photograph the whole after being inserted in the pit).

TOTALREX



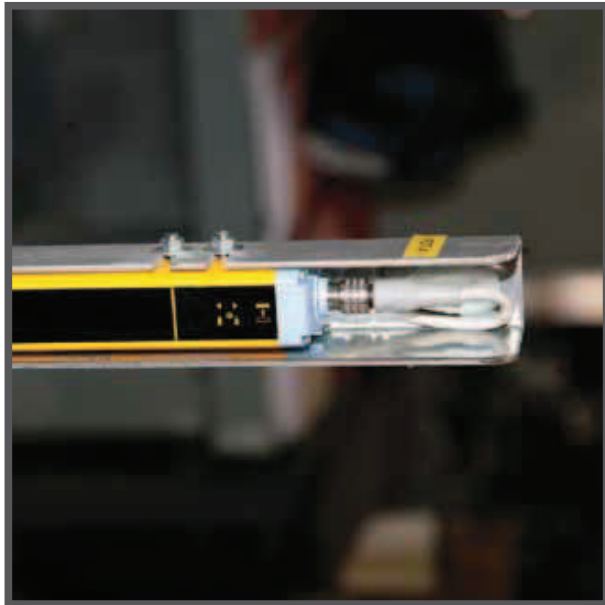
Among other things, the wheel stops secured to the platform help ensure complete vehicle safety on-board. This system prevents the vehicle from oscillating back and forth once on the platform.



One of the main characteristics of Omer SPA products is that weight is perfectly balanced on the platform, no matter where it is positioned. The system of Omer SPA units, in particular TOTAL REX, makes it possible to lift the platform while keeping it perfectly parallel to the ground, without any torsion or bending at all.

On the short sides of the platform, TOTAL REX has two photoelectric barriers that block the vehicle immediately and automatically as soon as they come into contact with the vehicle itself, thus protecting the vehicle from contact with the surrounding wall.





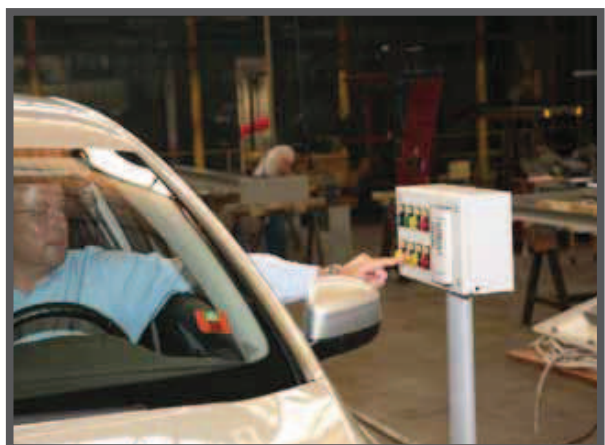
This photo shows the photocell fit inside a galvanized iron structure that protects both the transmission system (and receiver) and the electrical connections.



TOTAL REX is one of the few vehicle elevators on the market that allows a person to remain on-board and is also one of the most reliable car lifts on the market.



The various electrical connections of the pushbutton control panel to the electrical panel run through special aluminum ducts that prevent deterioration and tampering. The photo shows how carefully the product is manufactured.



The position of the control panel is specially designed so that, when the vehicle stops, the driver can easily reach through the window to operate the lift while comfortably seated in the vehicle.



The pushbutton panel also has normal controls to reach the desired floor as well as emergency buttons and an interphone to communicate with the outside using a telephone dialer.



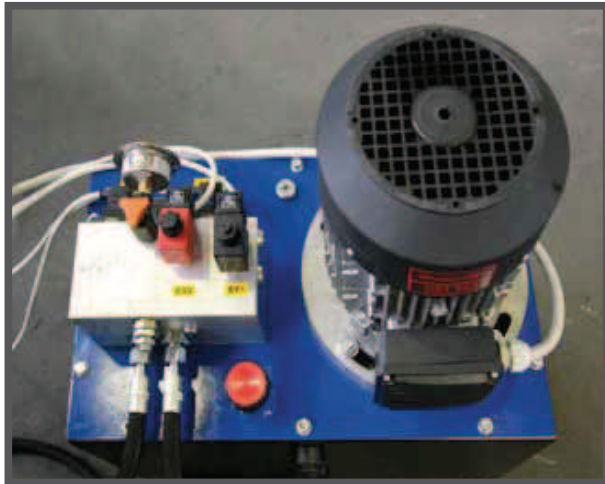
Here is another detail of electrical connection to the control panel. Note the aluminum duct the connections pass through.



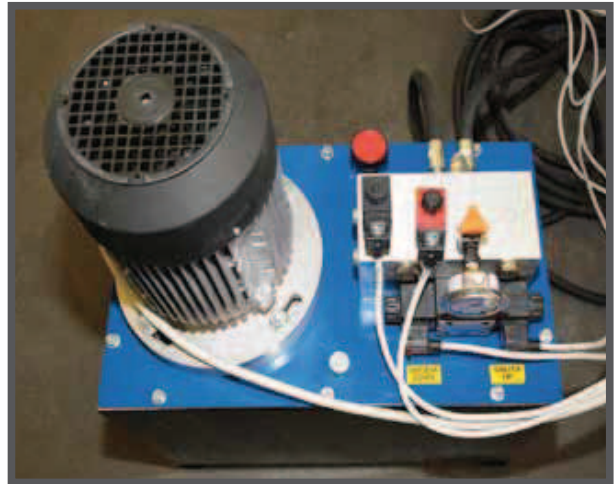
The maintenance panel allows the operator to move the unit from various positions, thus providing access under special circumstances and in full safety.



The pushbutton control panels on the various floors are used to call the lift; these panels also have safety keys to keep out unauthorised users. The pushbutton panel has class IP 65 protection rating against outside factors.



The overall view of the electric-hydraulic unit clearly shows how compact the unit is; a further indication that control unit requires minimum space.



Electrical control panel normally installed on the wall above the hydraulic unit.

The photo shows the telephone receiver used to contact the intercom on the platform.



Detail of the lock for manual control of the doors (optional).



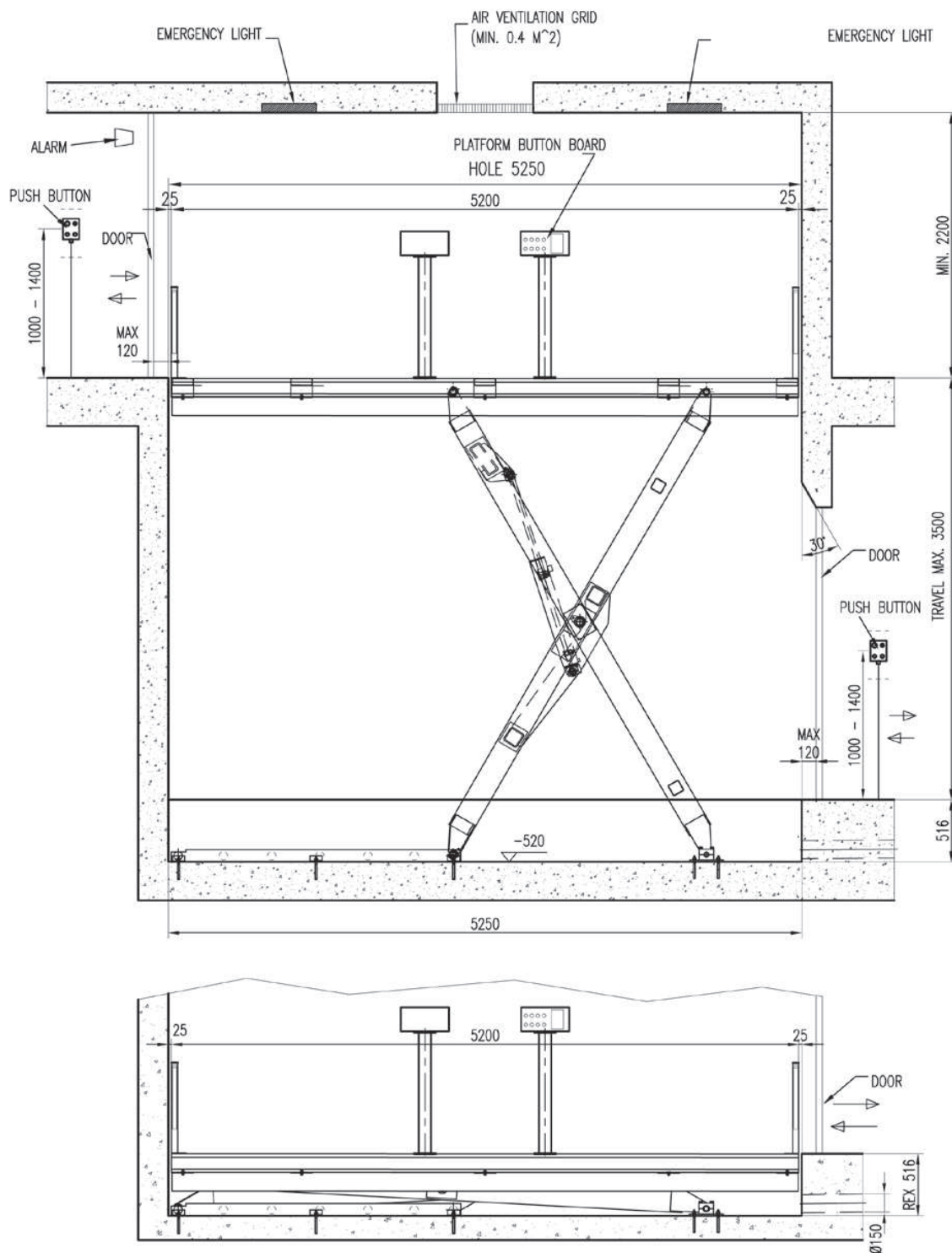
Magnetic sensor controls opening of the motorized doors.

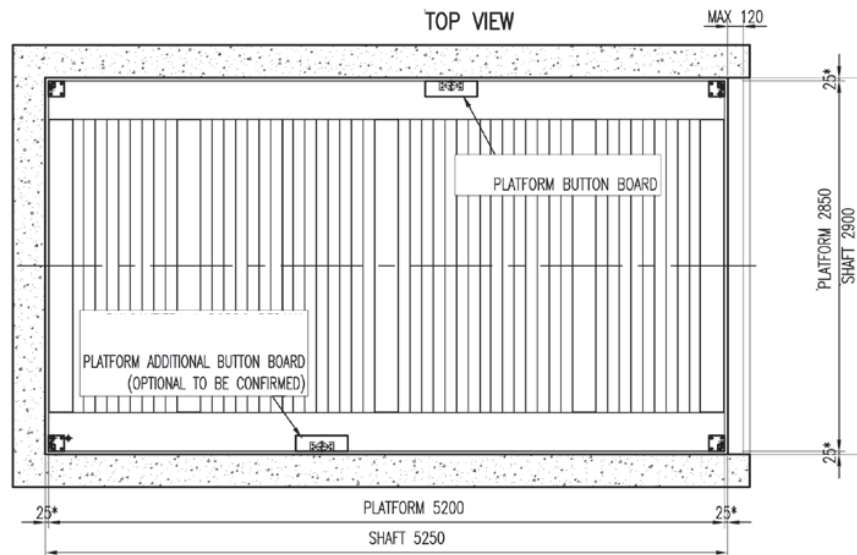
Connection to the control unit enables or disables automatic opening of the doors. (standard).

The telephone dialer, located on the electrical panel, can repeat dial seven numbers, continuing until the first available number answers.

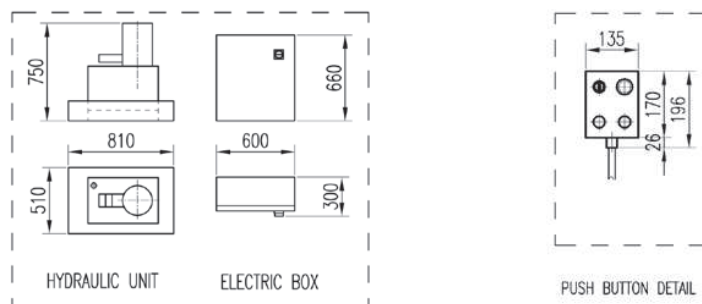
The device has 22 country codes, thus adapting the unit to the national telephone network.



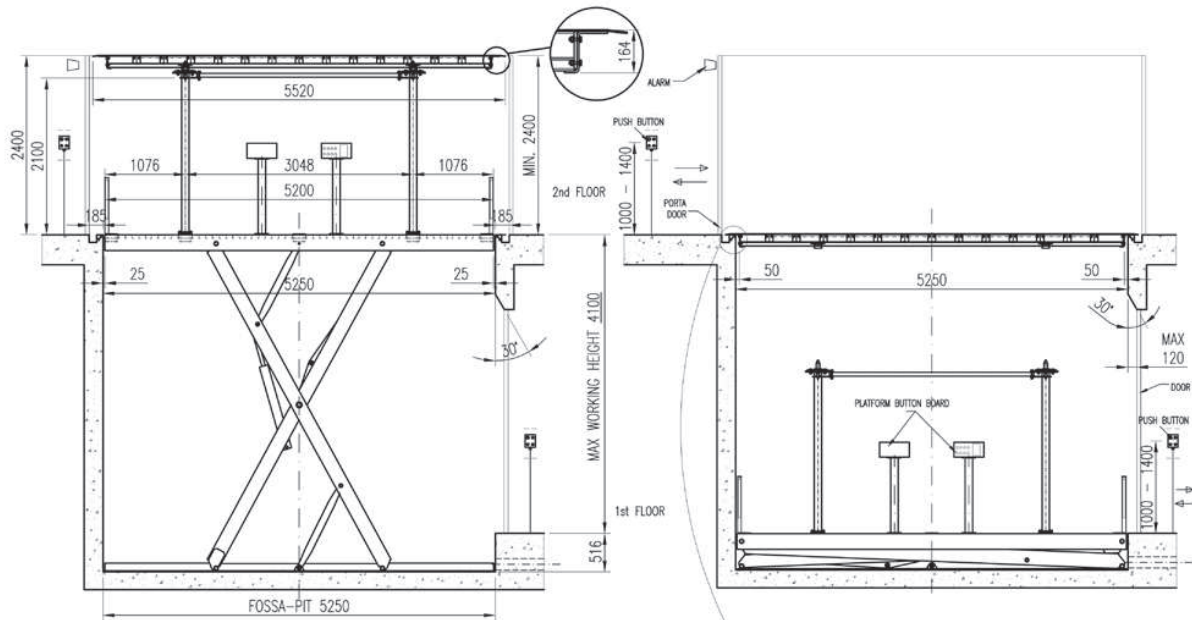




(*) PLEASE LET TAKE INTO ACCOUNT THAT
A CLEARANCE <25 mm HAS TO BE MANDATORY

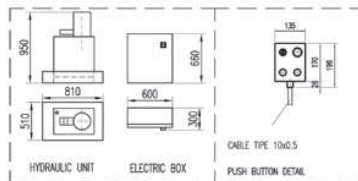


FENCES AND SAFETY DEVICES
AND PROTECTIONS HAVE TO
BE DEFINED BY THE
INSTALLATION MANAGER ACCORDING
THE FINAL LAYOUT AND THE
RELEVANT RISK ANALYS

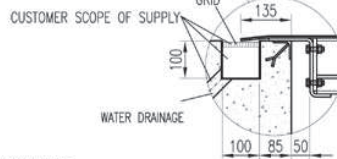


TOTALREX LIFTED SIDE VIEW

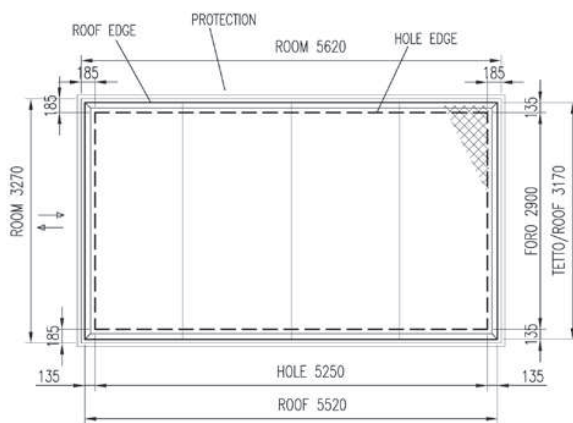
TOTALREX COLLAPSED SIDE VIEW



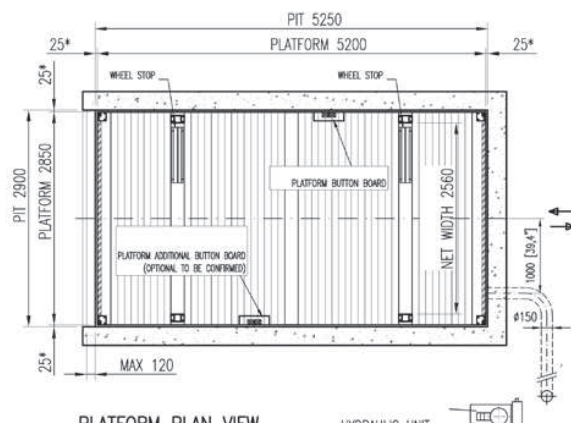
(*) PLEASE LET TAKE INTO ACCOUNT THAT A CLEARANCE <25 mm HAS TO BE MANDATORY



FENCES AND SAFETY DEVICES AND PROTECTIONS HAVE TO BE DEFINED BY THE INSTALLATION MANAGER ACCORDING THE FINAL LAYOUT AND THE RELEVANT RISK ANALYSIS



ROOF PLAN VIEW

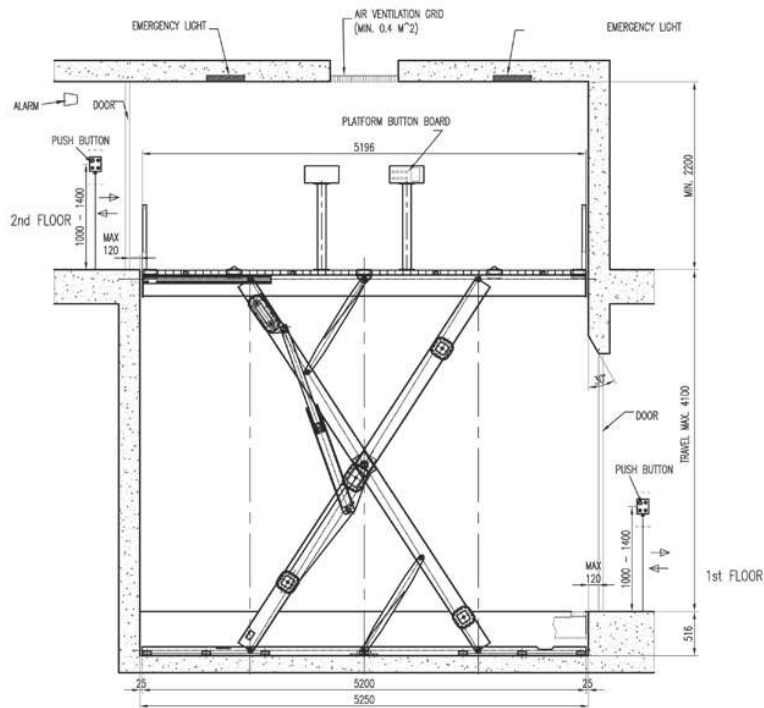


PLATFORM PLAN VIEW

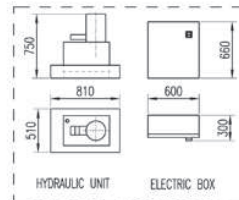
HYDRAULIC UNIT

DIMENSIONS mm

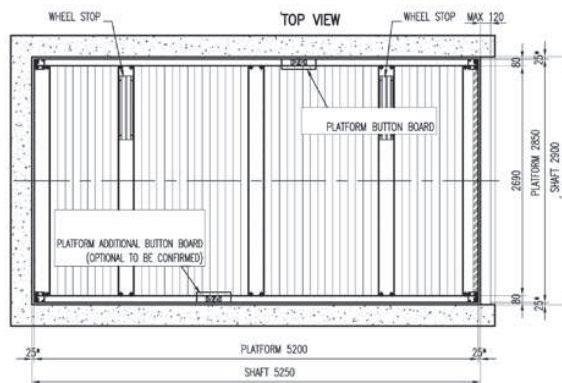
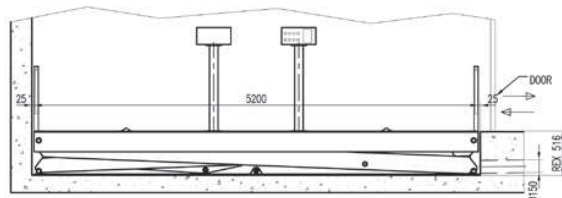
TOTALREX 30 GOLD



(*) PLEASE LET TAKE INTO ACCOUNT THAT A CLEARANCE <25 mm HAS TO BE MANDATORY



FENCES AND SAFETY DEVICES AND PROTECTIONS HAVE TO BE DEFINED BY THE INSTALLATION MANAGER ACCORDING THE FINAL LAYOUT AND THE RELEVANT RISK ANALYSIS



	Capacity	Standard Lifting Height	Max Lifting Height	Minimum Platform	Standard Platform	Max Platform	Net height	Pit	Power	Speed	Power supply	Standard Weight	Notes
TOTAL REX 30 GOLD	3.000 kg.	4.100 mm	4100 mm	2.450X5.200 mm	2.850x5.200 mm	3.000x6.000 mm		516 mm	4 kw	0,06 m/s	400 v / 50 hz	3.800 kg.	tiles on the platform max 70 kg/m ²
	6.608 lbs	161,4 inch	161,4 inch	96,5X204,7 inch	112,2x204,7 inch	118,1x236,2 inch		20,3 inch	5,5 / 10,2 hp	2,4 inch/s	400 v / 50 hz	8.370 lbs	
TOTAL REX 25 GOLD + T	2.500 kg.	4.100 mm	4.100 mm	2.450X5.200 mm	2.850x5.200 mm	3.000x6.000 mm	2.100 mm	516 mm	5,5 kw	0,06 m/s	400 v / 50 hz	5.600 kg.	T= roof
	5.507 lbs	161,4 inch	161,4 inch	96,5x204,7 inch	112,2x204,7 inch	118,1x236,2 inch	82,7 inch	20,3 inch	5,5 / 10,2 hp	2,4 inch/s	400 v / 50 hz	12.335 lbs	
TOTAL REX 30 GOLD F	3.000 kg.	4.100 mm	4.100 mm	2.450X5.200 mm	2.850x5.200 mm	3.000x6.000 mm		516 mm	4 kw	0,06 m/s	400 v / 50 hz	4000 kg.	F= flanged
	6.608 lbs	161,4 inch	161,4 inch	96,5X204,7 inch	112,2x204,7 inch	118,1x236,2 inch		20,3 inch	5,5 / 10,2 hp	2,4 inch/s	400 v / 50 hz	8.811 lbs	
TOTAL REX 25 GOLD F + T	2.500 kg.	4.100 mm	4.100 mm	2.450X5.200 mm	2.850x5.200 mm	3.000x6.000 mm	2100 mm	516 mm	5,5 kw	0,06 m/s	400 v / 50 hz	5.800 kg.	F= flanged T= roof
	5.507 lbs	161,4 inch	161,4 inch	96,5x204,7 inch	112,2x204,7 inch	118,1x236,2 inch	82,7 inch	20,3 inch	5,5 / 10,2 hp	2,4 inch/s	400 v / 50 hz	12.775 lbs	
TOTAL REX PF	3.000 kg.	3.500 mm	3.500 mm	2320X4700 mm	2850x5200 mm	3000x5600 mm		516 mm	4 kw	0,06 m/s	400 v / 50 hz	3.100 kg.	
	6.608 lbs	137,8 inch	161,4 inch	91,3x185 inch	112,2x204,7 inch	118,1x220,5 inch		20,3 inch	5,4 hp	2,4 inch/s	400 v / 50 hz	6.828 lbs	

ACCESSORIES

☒ STANDARD ☐ OPTIONAL

DESCRIPTION	TOTAL REX 30 GOLD	TOTAL REX 30 GOLD F	NOTES
Standard colours: BLU / BLUE RAL 5005 e/and ARGENTO / SILVER RAL 9006	<input checked="" type="checkbox"/>	<input checked="" type="checkbox"/>	
Nr. 1 galvanized platform structure	<input checked="" type="checkbox"/>	<input checked="" type="checkbox"/>	
nr. 1 warning siren	<input checked="" type="checkbox"/>	<input checked="" type="checkbox"/>	
Max. Travel 4.100 mm	<input checked="" type="checkbox"/>	<input checked="" type="checkbox"/>	
Max. Travel 3.500 mm			
Scissor coupling flange		<input checked="" type="checkbox"/>	

ACCESSORIES

■ STANDARD □ OPTIONAL

DESCRIPTION	TOTAL REX 30 GOLD	TOTAL REX 30 GOLD F	NOTES
Nr. 2 pit bases plate	■	■	
Nr. 2 lifting cylinder	■	■	
Nr. 2 Light Barriers H=500 mm.	■	■	
Nr. 1 Command Board on the platform	■	■	
Nr. 2 "dead man" push-button board	■	■	
Add. Push Button Board with Upright for double Entrance/Exit	□	□	
Security control module for sensors and safety locks	■	■	N.2 electromagnetic sensors included
Nr. 1 hydraulic control unit with motor	■	■	
Power Supply: 380-415V/3Ph/50-60Hz	■	■	
N° 2 stops wheels bars L=745 mm	■	■	
2 stops	■	■	
Mechanical and electrical safety devices	■	■	
Roof transiting capacity: 3000 kg. (Not suitable to lift a vehicle)			
Roof supplied with diamond plate			
Roof for tiles application includes 3 cm. height perimeter frame			Tiles weight up to 70 Kg. square mt. Max - minimum travel 3000 mm - The pit dimensions are modified in order to take into account the tiles depth
Nylon Package	■	■	
Screws anchor	■	■	
Undersized / oversized non standard platform	□	□	
Smooth plate platform set for tiles application	□	□	Includes 3 cm. height perimeter frame - max. 70 kg. square m
Capacity until 8.800 Lbs.	□	□	
Additional Stop	□	□	
Additional push button board	□	□	
Safety lock for concertina and standard doors	□	□	
Additional electro - magnetic sensor	□	□	
Outside Pulse Recall for each Push Button Board	□	□	Suitable only for closed shaft
Pulse Command Return to Home Position Button	□	□	Suitable only for closed shaft
Outside Infra-red Remote Control - Each Receiver	□	□	Max. 5 mt. distance
Outside Infra-red Remote Control - Each Transmitter	□	□	Max. 5 mt. distance
Flashing light	□	□	
Audible warning kit	□	□	
Two-colours tower light (Red / Green)	□	□	
Waterproof galvanised cover for control unit for outdoor installation	□	□	
Waterproof push-button board IP 65	□	□	
Lifting speed increase from 0,05 to 0,10 m/s	□	□	
Energy Saving Soft Start	□	□	
Nr. 1 fixed handrail protection without grid H=1.200 mm.(each meter)	□	□	
Nr. 1 removable handrail protection without grid H=1.200 mm.(each meter)*	□	□	
Light Barriers	□	□	
Roof Car Presence Sensor (Nr. 2)			
Non standard colour*	□	□	
Push button board people lift design*	□	□	
Hot Galvanisation	□	□	
Roof Hot Galvanisation	□	□	
Wood Pallet for Rex Machine	□	□	
Wood Pallet for Platform Plates	□	□	
Control Panel Crate	□	□	

ACCESSORIES

■ STANDARD □ OPTIONAL

DESCRIPTION	TOTAL REX 25 GOLD + T	NOTES
Standard colours: BLU / BLUE RAL 5005 e/and ARGENTO / SILVER RAL 9006	■	
Nr. 1 platform composed by hot galvanised slats	■	
Max. Travel 4.100 mm	■	
Max. Travel 3.500 mm		
Scissor coupling flange		
Nr. 2 pit bases plate	■	
Nr. 2 lifting cylinder	■	
Nr. 2 "dead man" push-button board	■	
Security control module for sensors and safety locks	■	
Nr. 1 hydraulic control unit with motor	■	
Power Supply: 380-415V/3Ph/50-60Hz	■	
N° 2 stops wheels bars L=745 mm	■	
2 stops	■	
Mechanical and electrical safety devices	■	
Roof transiting capacity: 3000 kg. (Not suitable to lift a vehicle)	■	
Roof supplied with diamond plate	■	
Roof for tiles application includes 3 cm. height perimeter frame		tiles weight up to 70 Kg. square mt. Max - minimum travel 3000 mm - the pit dimensions are modified in order to take into account the tiles depth
Nylon Package	■	
Screws anchor	■	
Undersized / oversized non standard platform	□	
Capacity until 8.800 Lbs.	□	
Additional Stop	□	
Additional push button board	□	
Safety lock for concertina and standard doors	□	
Additional electro - magnetic sensor	□	
Outside Pulse Recall for each Push Button Board	□	suitable only for closed shaft
Pulse Command Return to Home Position Button	□	suitable only for closed shaft
Outside Infra-red Remote Control - Each Receiver	□	max. 5 mt. distance
Outside Infra-red Remote Control - Each Transmitter	□	max. 5 mt. distance
Flashing light	□	
Audible warning kit	□	
Two-colours tower light (Red / Green)	□	
Waterproof galvanised cover for control unit for outdoor installation	□	
Waterproof push-button board IP 65	□	
Lifting speed increase from 0,05 to 0,10 m/s	□	
Energy Saving Soft Start	□	
Nr. 1 fixed handrail protection without grid H=1.200 mm.(each meter)	□	
Nr. 1 removable handrail protection without grid H=1.200 mm.(each meter)*	□	
Light Barriers	□	
Roof Car Presence Sensor (Nr. 2)	□	
Non standard colour*	□	
Push button board people lift design*	□	
Hot Galvanisation	□	
Roof Hot Galvanisation	□	
Wood Pallet for Rex Machine	□	
Wood Pallet for Platform Plates	□	
Control Panel Crate	□	

ACCESSORIES

■ STANDARD □ OPTIONAL

DESCRIPTION	TOTAL REX 25 GOLD + TF	TOTAL REX 25 GOLD + T	NOTES
Standard colours: BLU / BLUE RAL 5005 e/and ARGENTO / SILVER RAL 9006	■	■	
Nr. 1 platform composed by hot galvanised slats	■	■	
Max. Travel 4.100 mm	■	■	
Max. Travel 3.500 mm			
Scissor coupling flange	■		
Nr. 2 pit bases plate	■	■	
Nr. 2 lifting cylinder	■	■	
Nr. 2 "dead man" push-button board	■	■	
Security control module for sensors and safety locks	■	■	
Nr. 1 hydraulic control unit with motor	■	■	
Power Supply: 380-415V/3Ph/50-60Hz	■	■	
N° 2 stops wheels bars L=745 mm	■	■	
2 stops	■	■	
Mechanical and electrical safety devices	■	■	
Roof transiting capacity: 3000 kg. (Not suitable to lift a vehicle)	■	■	
Roof supplied with diamond plate	■	■	
Roof for tiles application includes 3 cm. height perimeter frame			tiles weight up to 70 Kg. square mt. Max - minimum travel 3000 mm - the pit dimensions are modified in order to take into account the tiles depth
Nylon Package	■	■	
Screws anchor	■	■	
Undersized / oversized non standard platform	□	□	
Capacity until 8.800 Lbs.		□	
Additional Stop	□	□	
Additional push button board	□	□	
Safety lock for concertina and standard doors	□	□	
Additional electro - magnetic sensor	□	□	
Outside Pulse Recall for each Push Button Board	□	□	suitable only for closed shaft
Pulse Command Return to Home Position Button	□	□	suitable only for closed shaft
Outside Infra-red Remote Control - Each Receiver	□	□	max. 5 mt. distance
Outside Infra-red Remote Control - Each Transmitter	□	□	max. 5 mt. distance
Flashing light	□	□	
Audible warning kit	□	□	
Two-colours tower light (Red / Green)	□	□	
Waterproof galvanised cover for control unit for outdoor installation	□	□	
Waterproof push-button board IP 65	□	□	
Lifting speed increase from 0,05 to 0,10 m/s	□	□	
Energy Saving Soft Start	□	□	
Nr. 1 fixed handrail protection without grid H=1.200 mm.(each meter)	□	□	
Nr. 1 removable handrail protection without grid H=1.200 mm.(each meter)*	□	□	
Light Barriers	□	□	
Roof Car Presence Sensor (Nr. 2)	□	□	
Non standard colour*	□	□	
Push button board people lift design*	□	□	
Hot Galvanisation	□	□	
Roof Hot Galvanisation	□	□	
Wood Pallet for Rex Machine	□	□	
Wood Pallet for Platform Plates	□	□	
Control Panel Crate	□	□	